



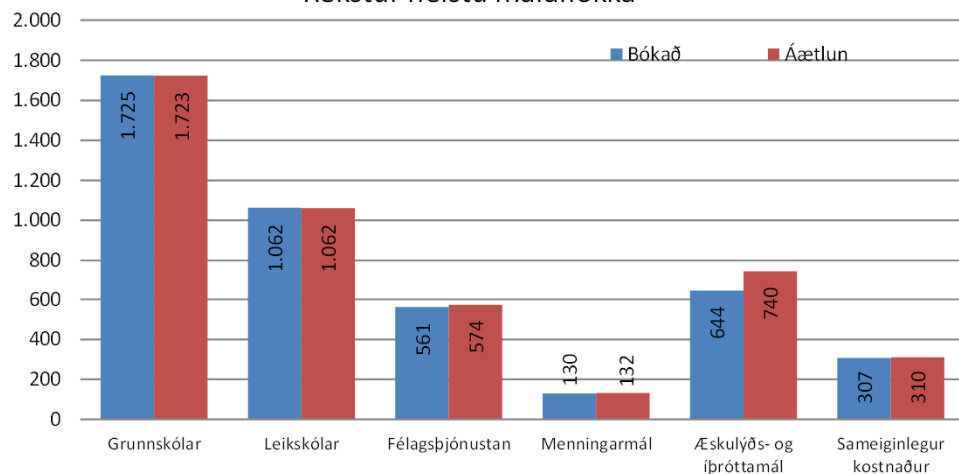
Mánaðarskýrsla Kópavogsbæjar. Útgefin í maí 2014.
Nær til starfsemi í apríl 2014.



Fjármál

	Bókað	Áætlun	Mismunur	%
Tekjur	9.254.522.241	9.463.870.116	-209.347.875	98
Gjöld án fjármagnsliða	7.804.942.149	8.044.259.761	-239.317.612	97
	Bókað	Áætlun		
Grunnskólar	1.725.156.014	1.722.596.758	2.559.256	100
Leikskólar	1.062.379.028	1.061.933.871	445.157	100
Félagsþjónustan	561.198.246	573.887.577	-12.689.331	98
Menningarmál	130.138.791	131.977.879	-1.839.088	99
Æskulýðs- og íþróttamál	644.396.412	740.218.280	-95.821.868	87
Sameiginlegur kostnaður	306.754.924	310.286.364	-3.531.440	99

Rekstur helstu málaflokka



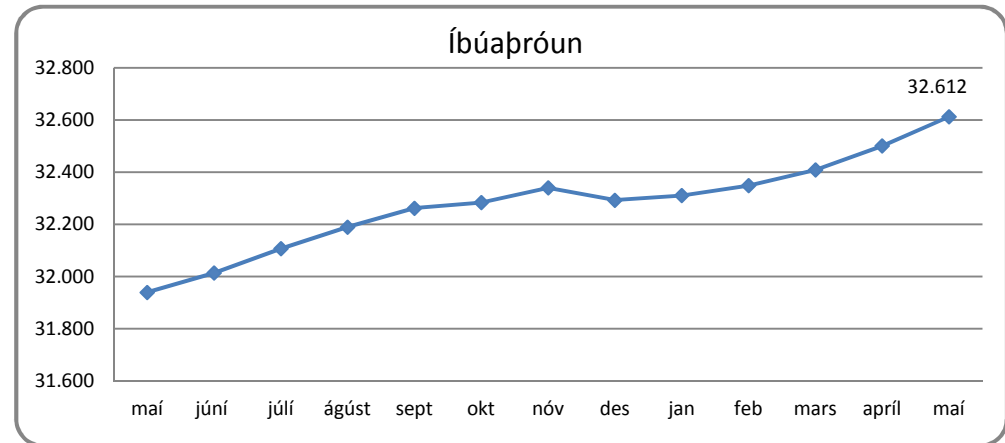
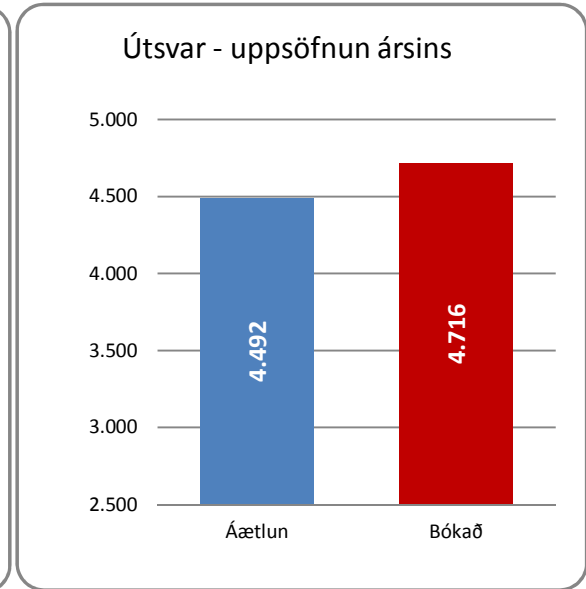
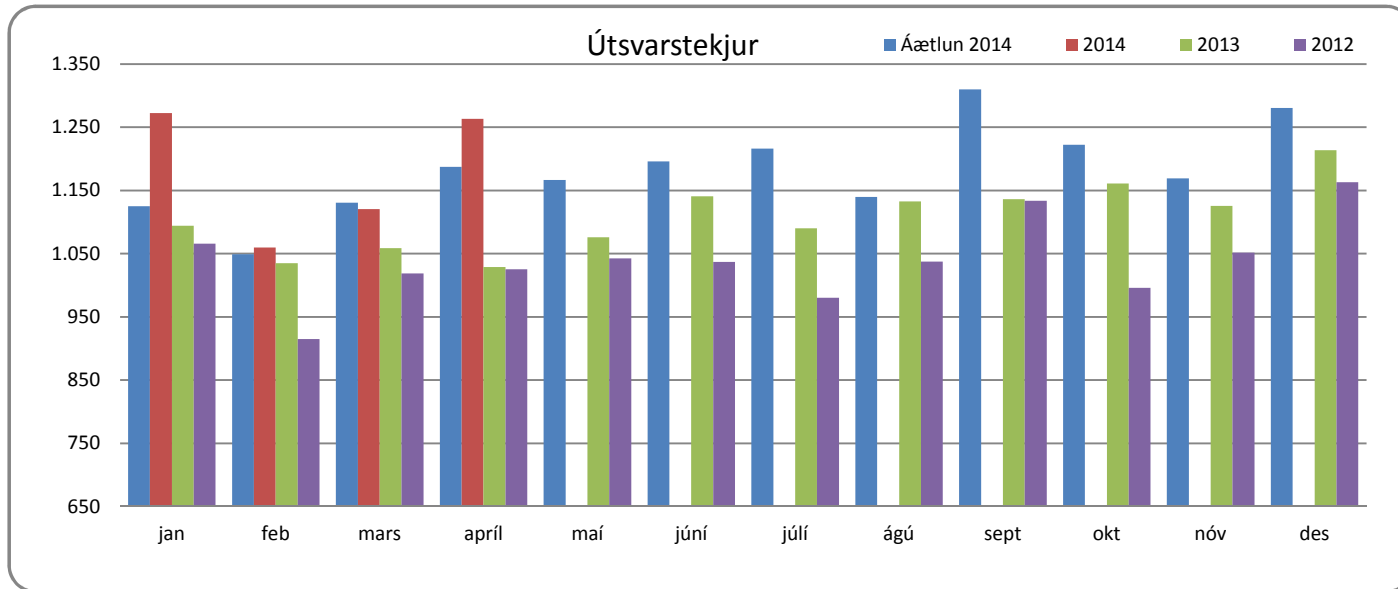
Fréttir

Niðurstaða nýrrar viðhorfskönnunar menntasviðs Kópavogsbæjar er að almenn ánægja ríki með starf dagforeldra í Kópavogi. 95 prósent foreldra eru mjög ánægð eða ánægð með samstarf við dagforeldri. Upphaflegt úrtak í könnuninni voru 198 foreldrar en 113 svöruðu henni. Alls starfa um 50 dagforeldrar í Kópavogsbæ.

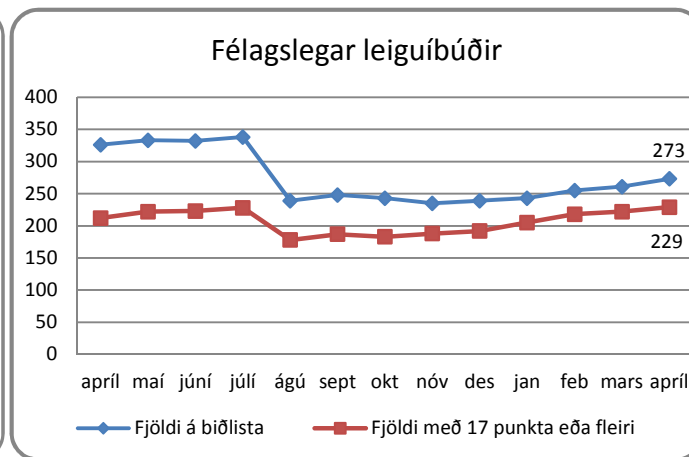
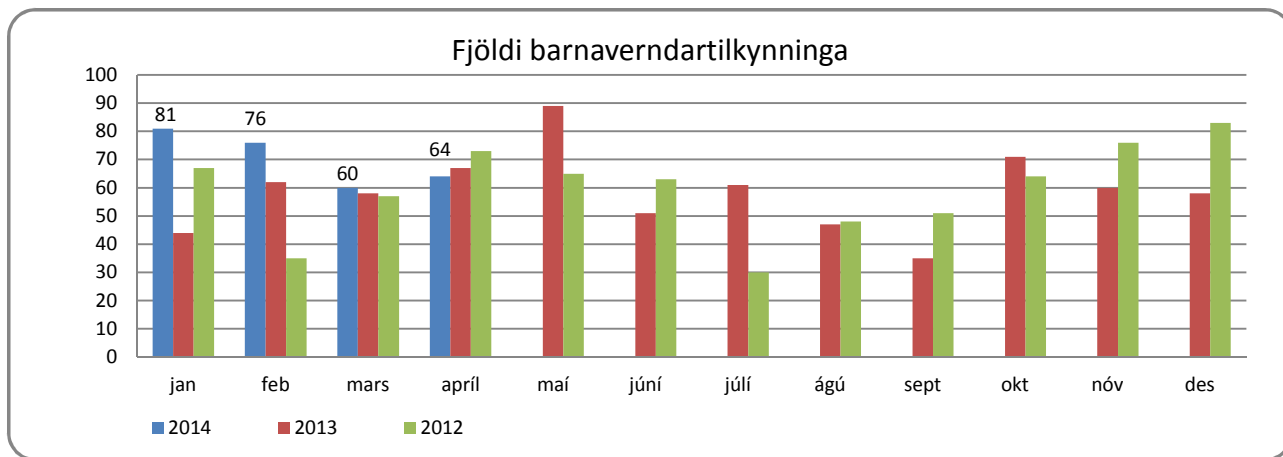
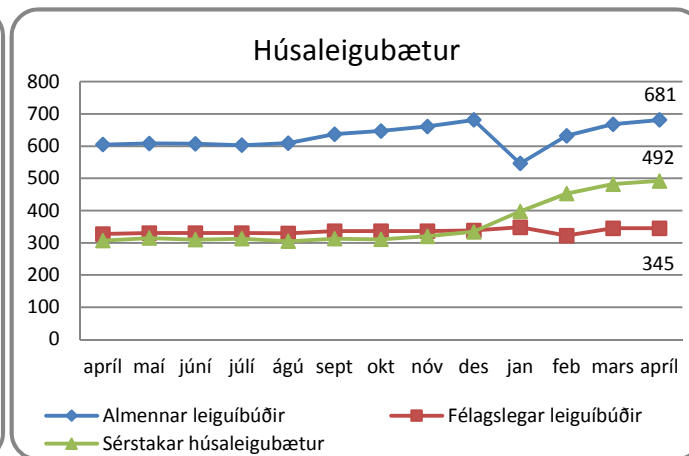
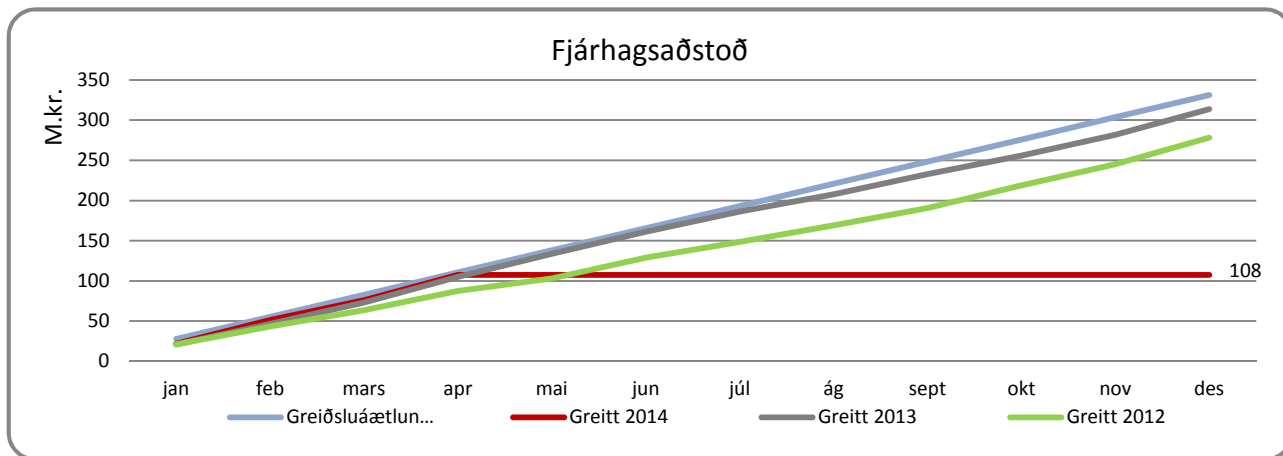
Í greiningu á fasteignamarkaði í Kópavogi sem Capacent vann fyrir Kópavogsbæ kom fram að nægilegt framboð er af leiguhúsnaði í Kópavogi næstu þrjú árin, þó skortur sé á því á höfuðborgarsvæðinu. Þá segir í greiningunni að eftirspurn sé tekin að myndast fyrir nýbyggingu fjölbýlishúsa en kaupverð stýðji ekki við frekari byggingu á sérþýli.

Ársreikningur Kópavogsbæjar var lagður fram í bæjarráði 16. apríl. Skuldir lækkuðu um rúma tvo milljarða. Rekstrarafgangur samstæðu Kópavogsbæjar var 1.192 milljónir á árinu 2013 en áætlun gerði ráð fyrir 108 milljónum. Skýringin er einkum hagnaður vegna úthlutunar lóða sem nemur um 660 milljónum króna. Tekjur bæjarins voru 21.818 milljónir króna á árinu en bein rekstrargjöld 16.898 milljónir króna.

Fyrsta útskriftarsýning meistaranema í hönnun og myndlist við Listaháskóla Íslands, LHÍ, opnaði í Gerðarsafni 12. apríl. Útskriftarsýningar meistaranema verða í Gerðarsafni næstu árin samkvæmt samkomulagi skólans og bæjarins. Þá voru fjölmargir útskriftartónleikar tónlistarnema Listaháskólans haldnir í Salnum í apríllök.

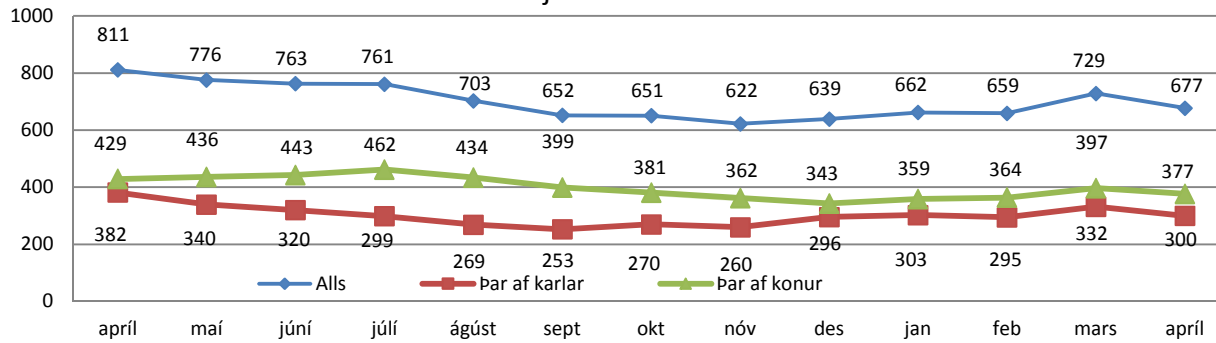


Velferðarmál

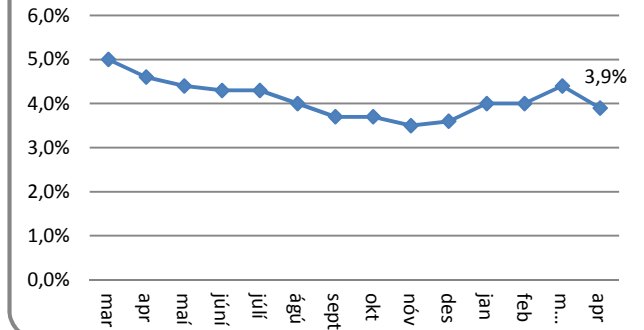


* miðað er við sveitarfélag lögheimilis við skráningu (áður sveitarfélag dvalarstaðar) frá og með nóvember 2013

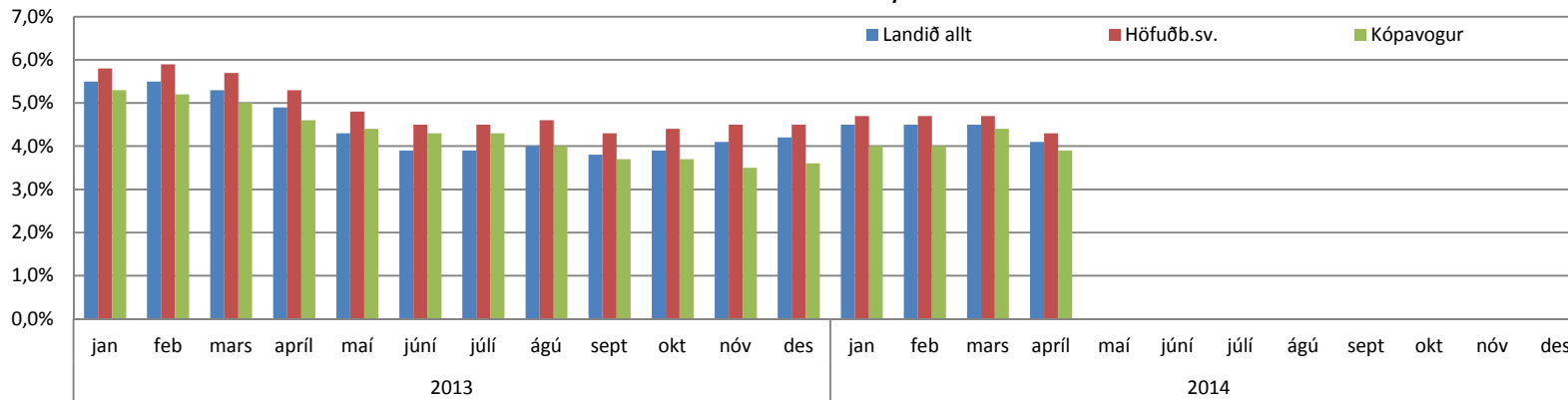
Fjöldi atvinnulausra



Áætlað atvinnuleysi

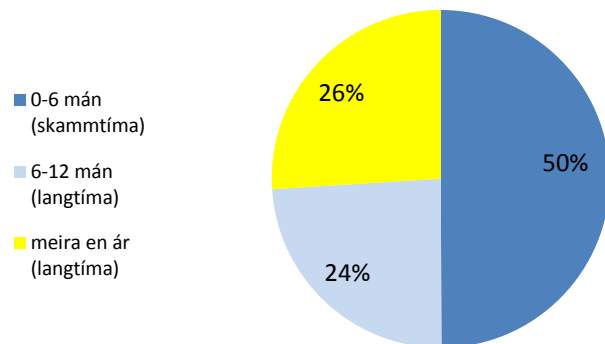


Atvinnuleysi - samanburður

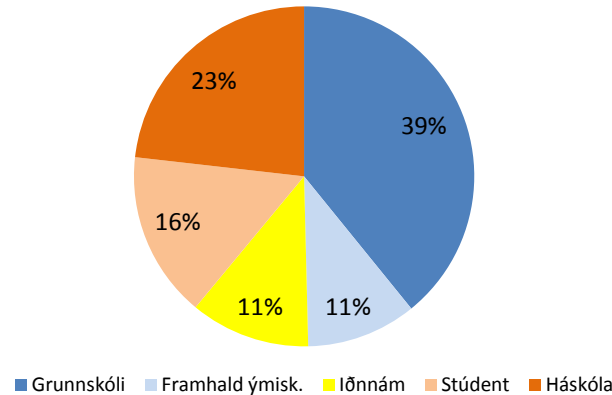


Í hverjum mánuði eru atvinnulausir í hlutastörfum á skrá í Kópavogi tæplega 10%, en tölur af landinu öllu og höfuðborgarsvæðinu miðast við atvinnuleysisdaga í hverjum mánuði (meðaltalsfjöldi). Því er ekki um samanburðarhæfar tölur að ræða að fullu.

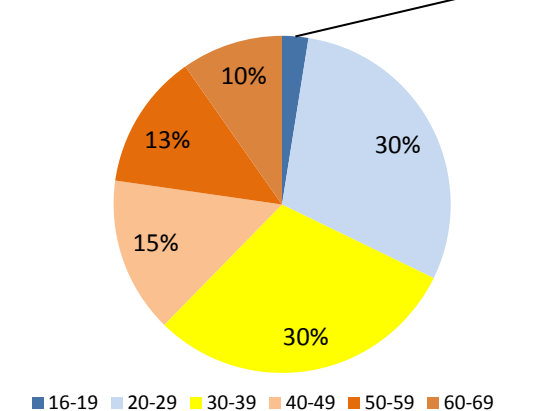
Lengd atvinnuleysis



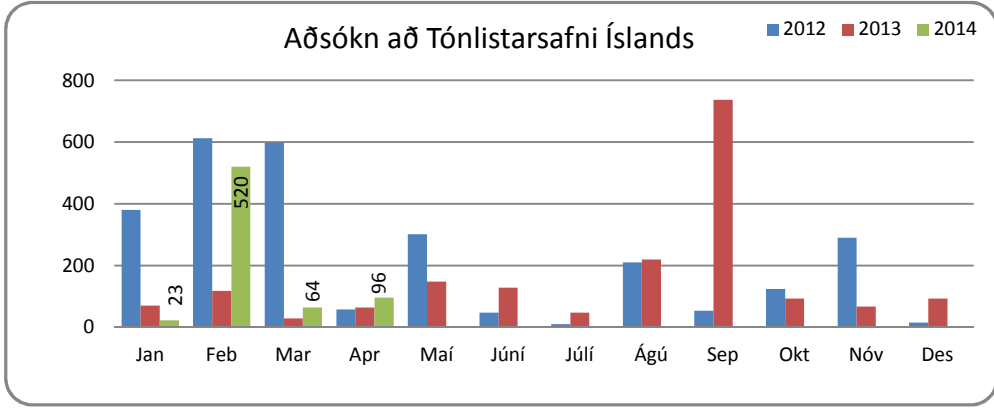
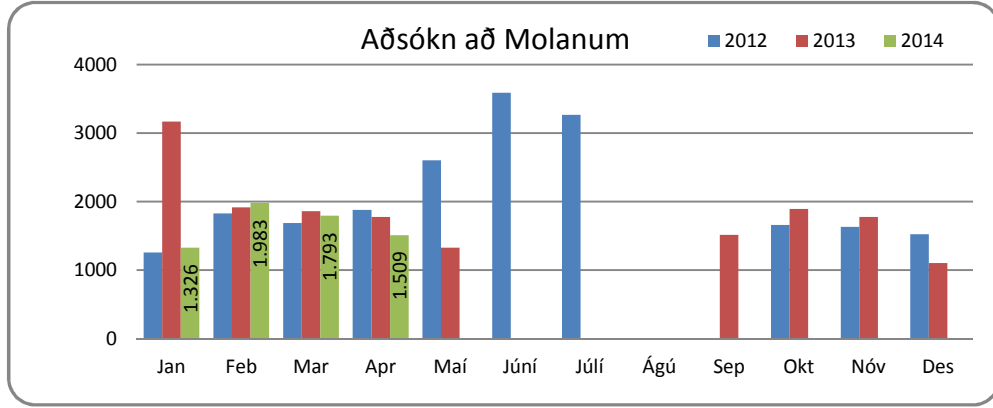
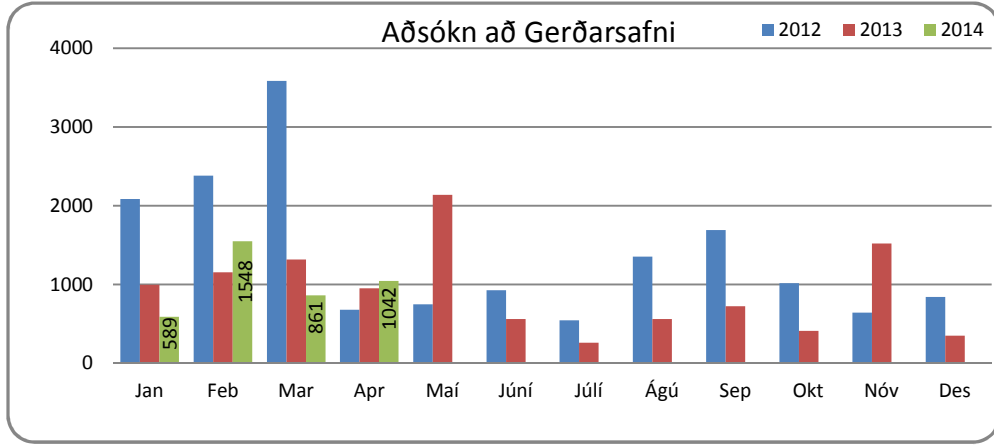
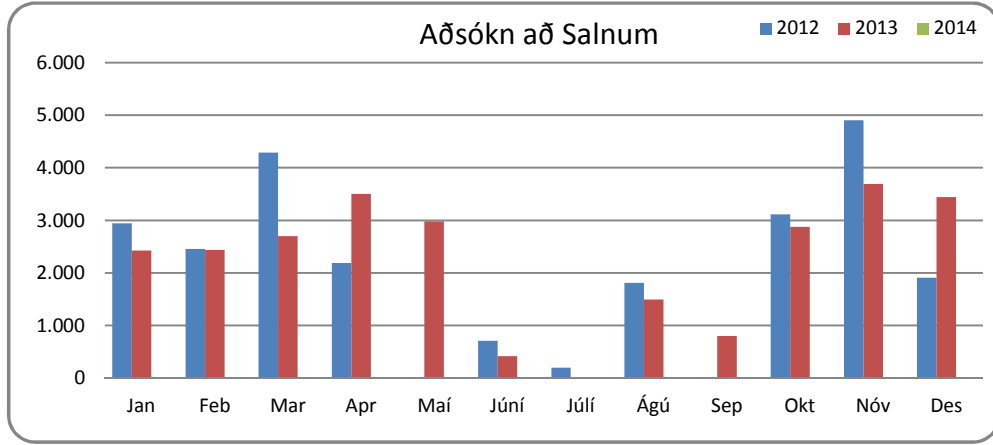
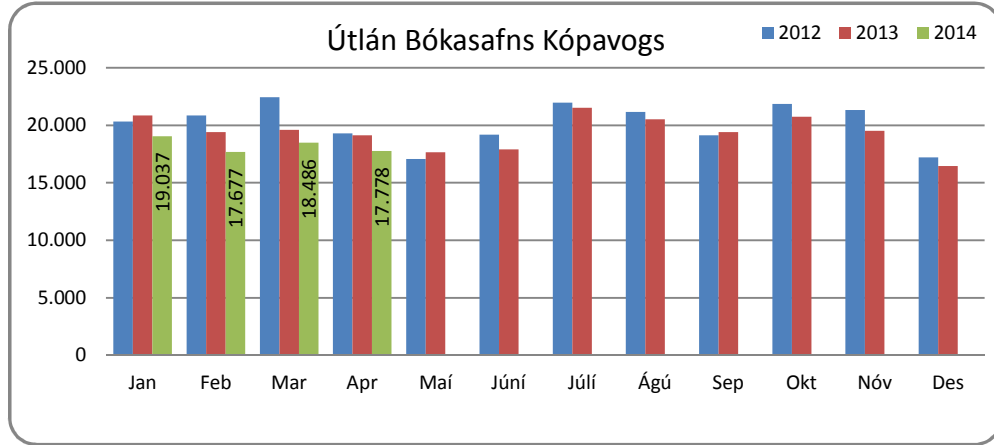
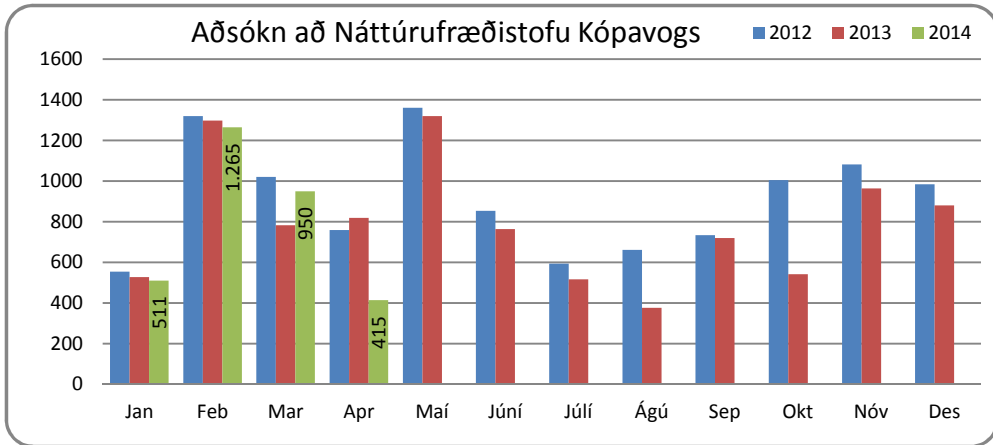
Menntunarstig atvinnulausra

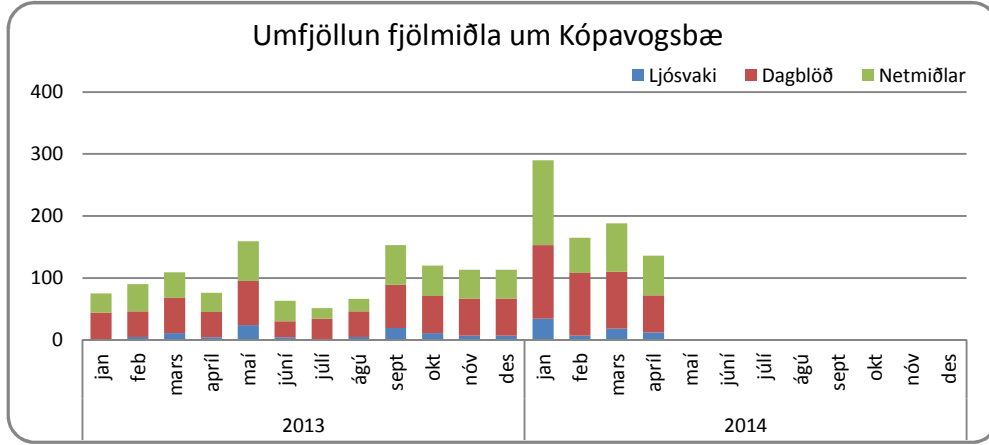
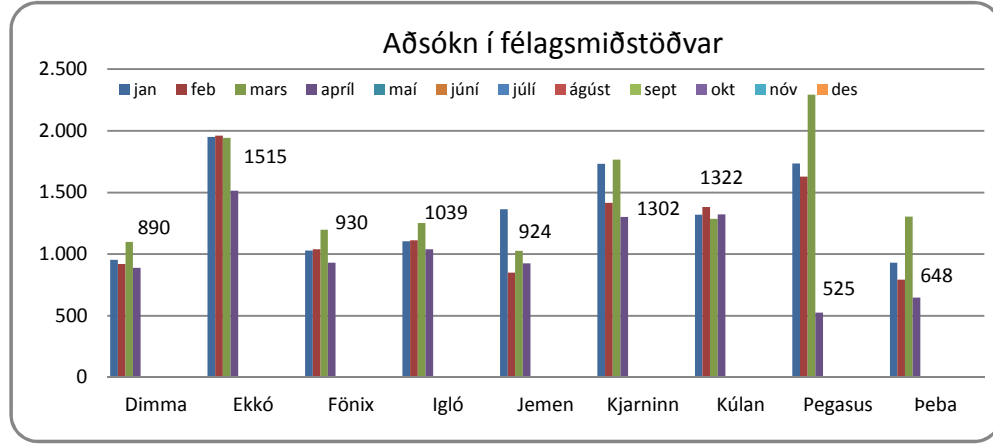
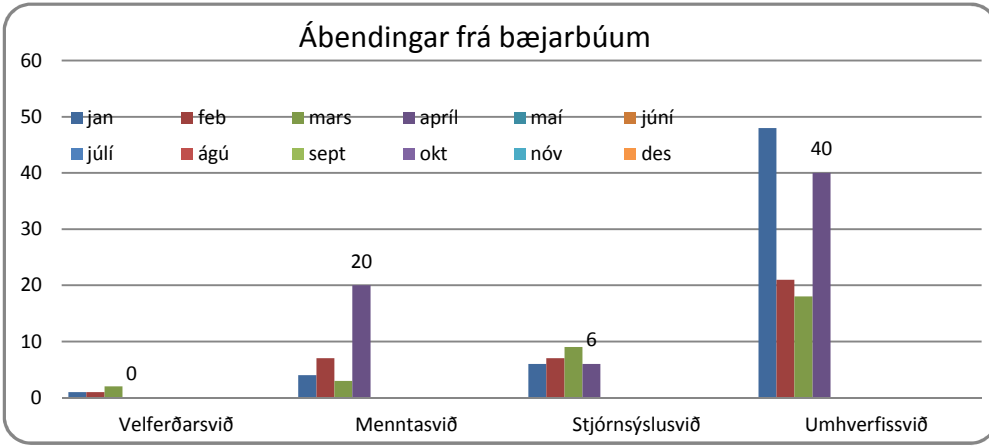
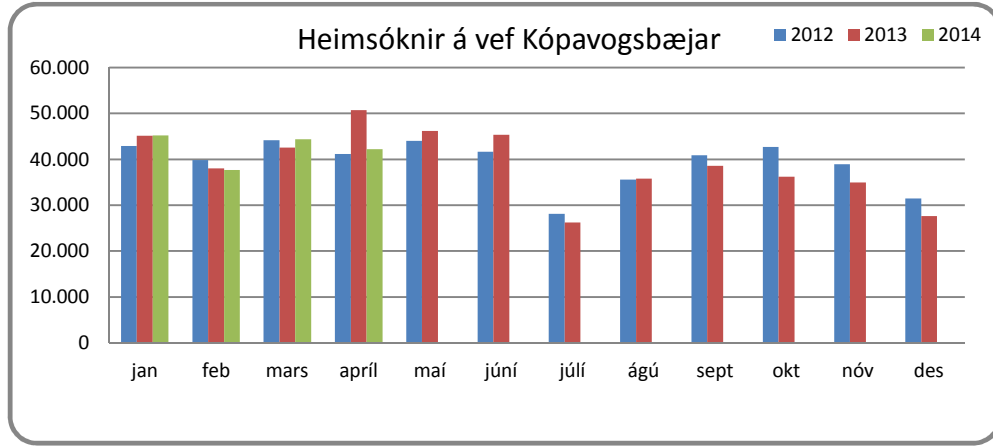
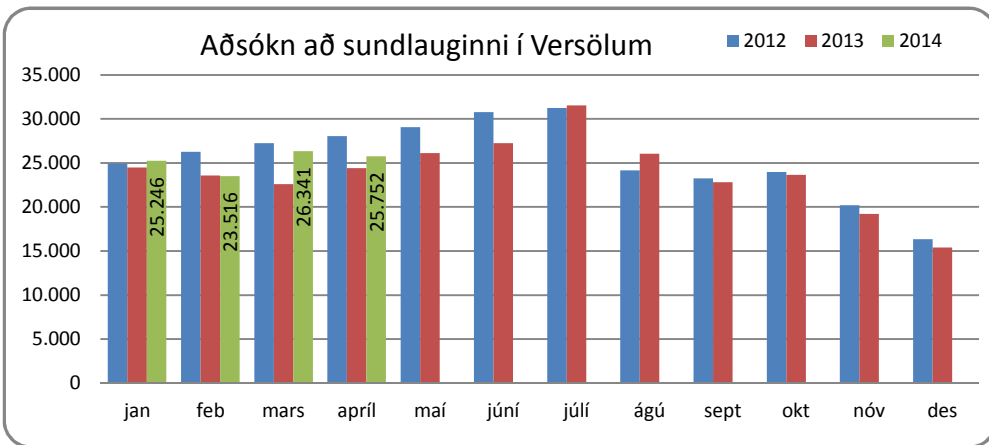
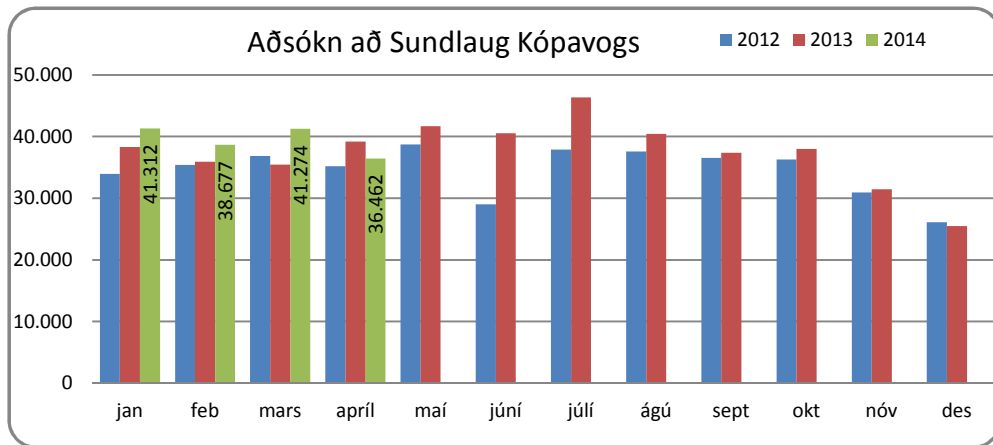


Aldursskipting atvinnulausra

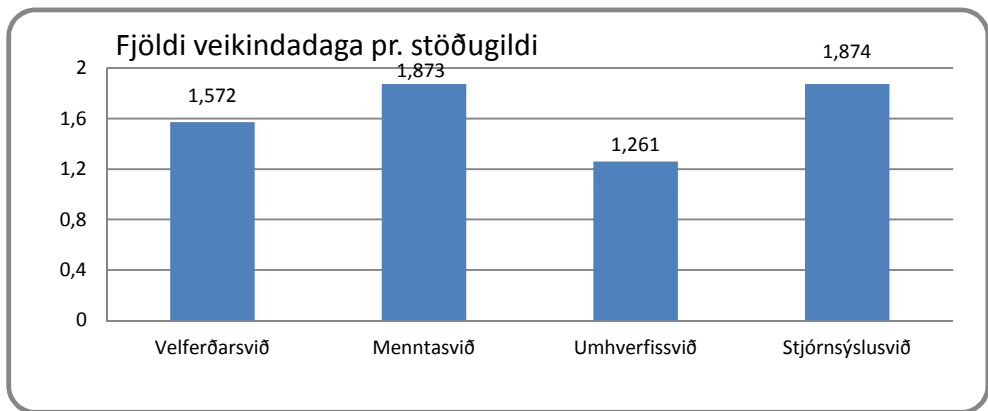
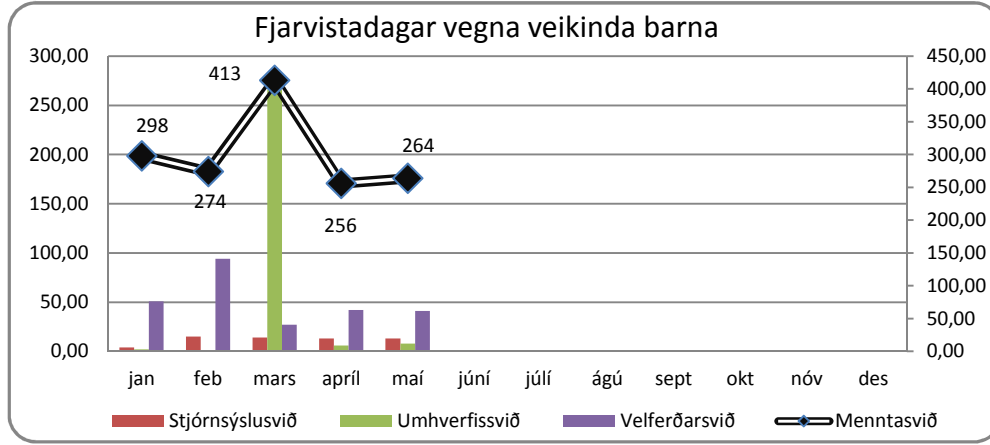
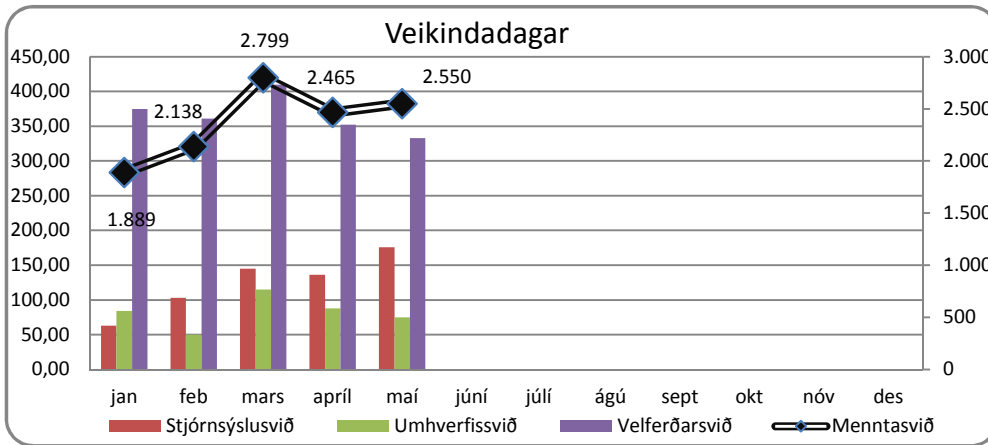
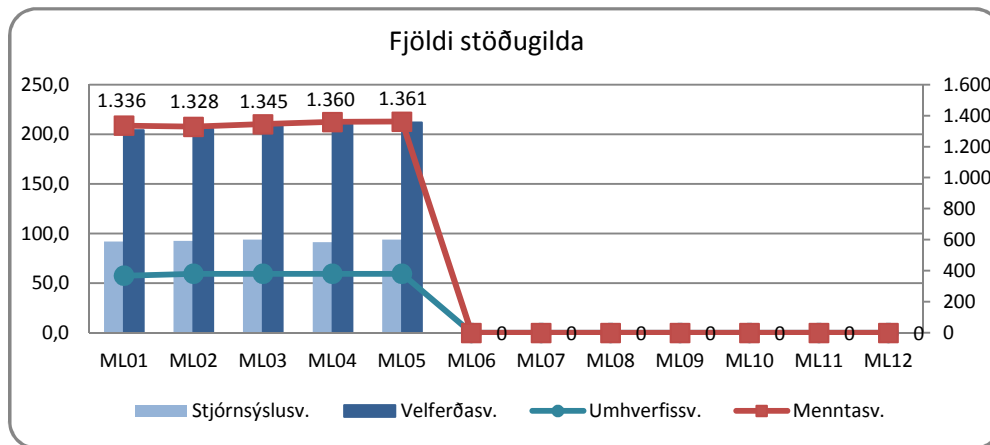
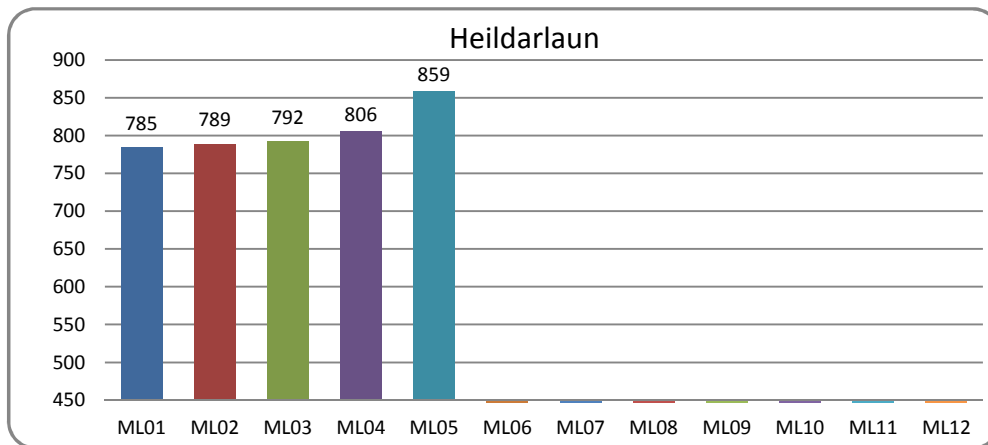


Ýmsar mælingar





Starfsmannamál



Heildarlaun starfsmanna Kópavogsbæjar eru í milljónum króna. ML04 stendur fyrir útborguð mánaðarlaun 1. apríl. Tölur eru með launatengdum gjöldum.