



Mánaðarskýrsla Kópavogsbæjar. Útgefin í nóvember 2016.
Nær til starfsemi í október 2016.



Fjármál

	Bókað	Áætlun	Mismunur	%
Tekjur	28.103.390.671	27.394.747.590	708.643.081	103
Gjöld án fjármagnsliða	23.844.015.814	23.854.634.639	-10.618.825	100
Grunnskólar	5.540.436.968	5.354.021.946	186.415.022	103
Leikskólar	3.346.867.629	3.340.282.372	6.585.257	100
Félagsþjónustan	2.265.051.688	2.304.881.554	-39.829.866	98
Menningarmál	418.056.446	392.652.392	25.404.054	106
Æskulýðs- og íþróttamál	2.152.693.840	2.190.278.563	-37.584.723	98
Sameiginlegur kostnaður	938.022.864	882.588.047	55.434.817	106

Fréttir

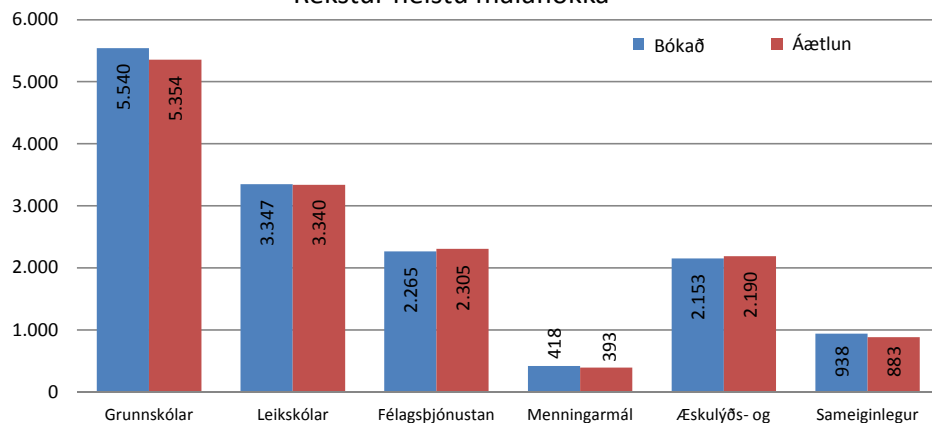
900 kennarar í skólum og leikskólum Kópavogs og starfsmenn skóla bæjarins komu saman á Skólapingi Kópavogs 7. október. Umfjöllunarefni þingsins var mál og lestur og fór það fram í grunnskólum Kópavogs. Fjallað var um viðfangsefnið frá nokkrum sjónarhornum. Þetta er í fyrsta sinn sem haldið er sameiginlegt þing fyrir leik- og grunnskóla í Kópavogi.

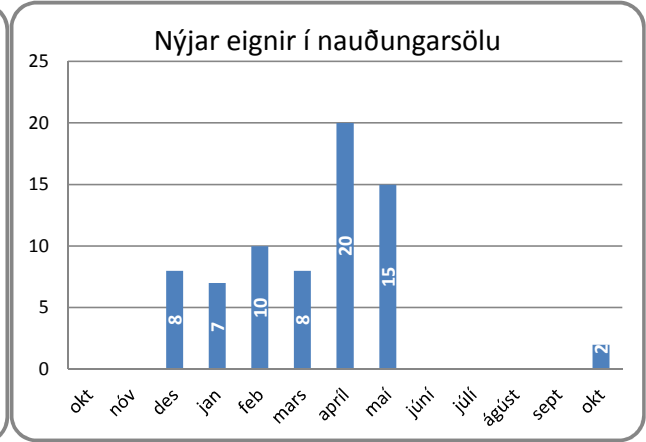
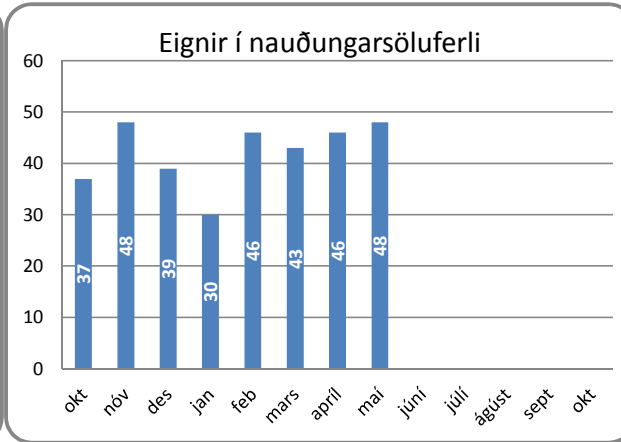
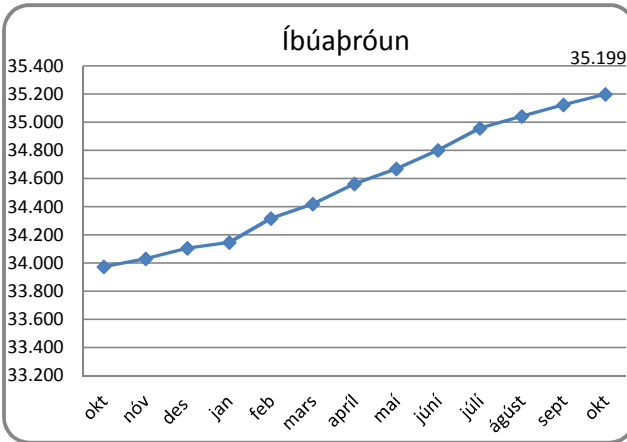
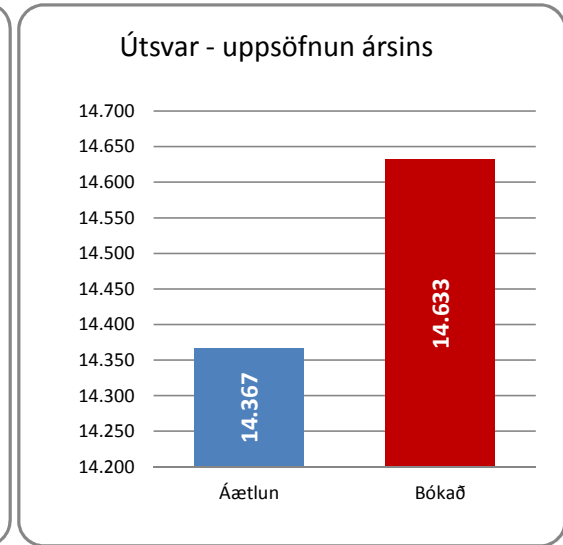
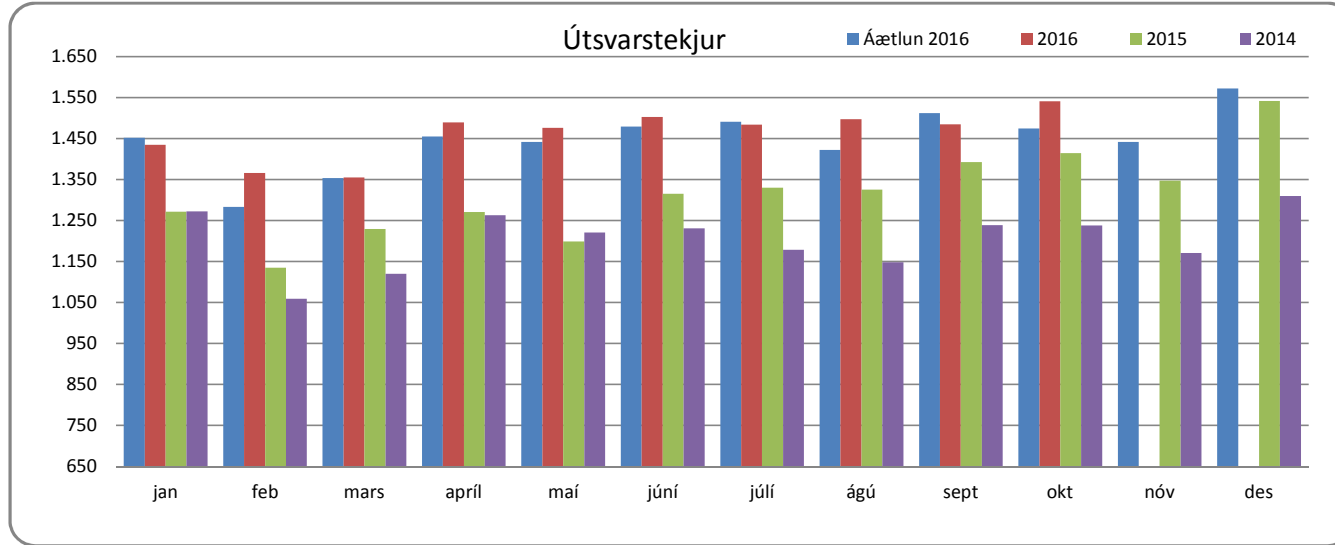
Alþjóðlega listahátíðin Cycle var haldin í Kópavogi í annað sinn. Hátíðin sem er vettvangur samtímatónlistar og myndlistar fór fram í menningarhúsunum í Kópavogi 27. október til 30. október. Cycle samanstóð af sýningu í Gerðarsafni, fjölmörgum tónleikum og gjörningum.

Kópavogsbær og akstursfyrirtækið Efstihóll ehf. skrifuðu undir samning um ferðaþjónustu fatlaðra í Kópavogi. Samið var til fimm ára með möguleika á tveggja ára framlengingu. Að jafnaði nota um 250 íbúar ferðaþjónustu fyrir fatlaða í Kópavogi og er áætlaður heildarfjöldi ferða á ári tæplega 60 þúsund.

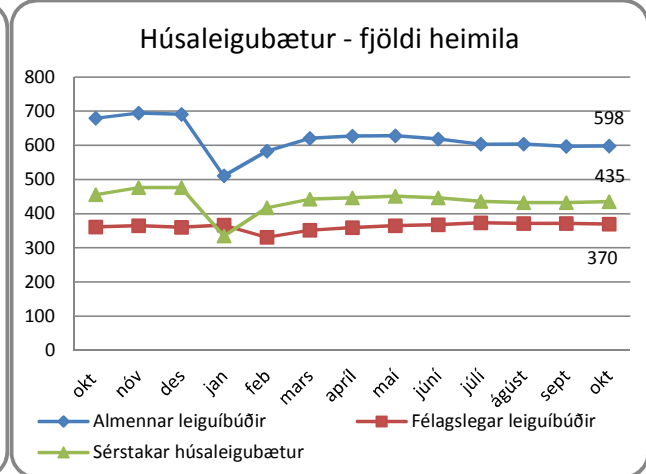
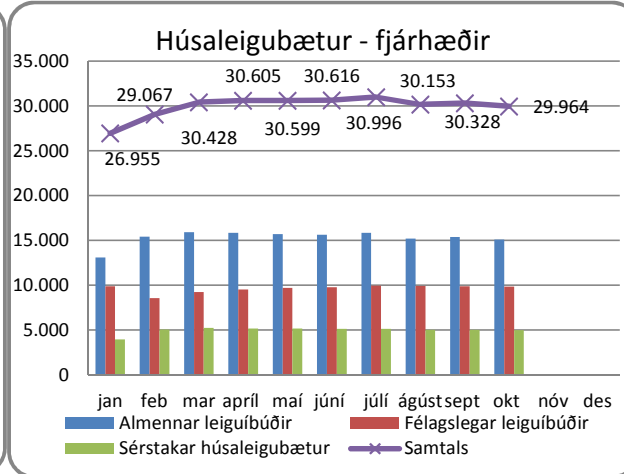
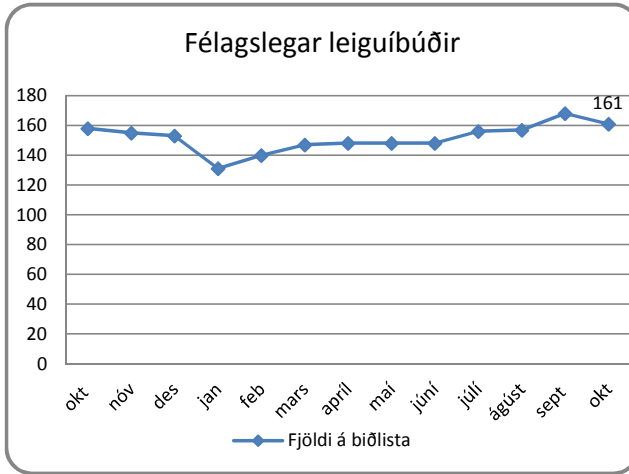
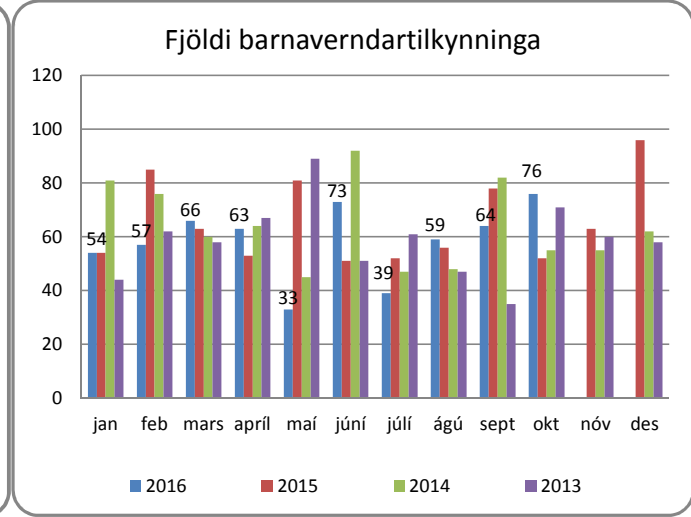
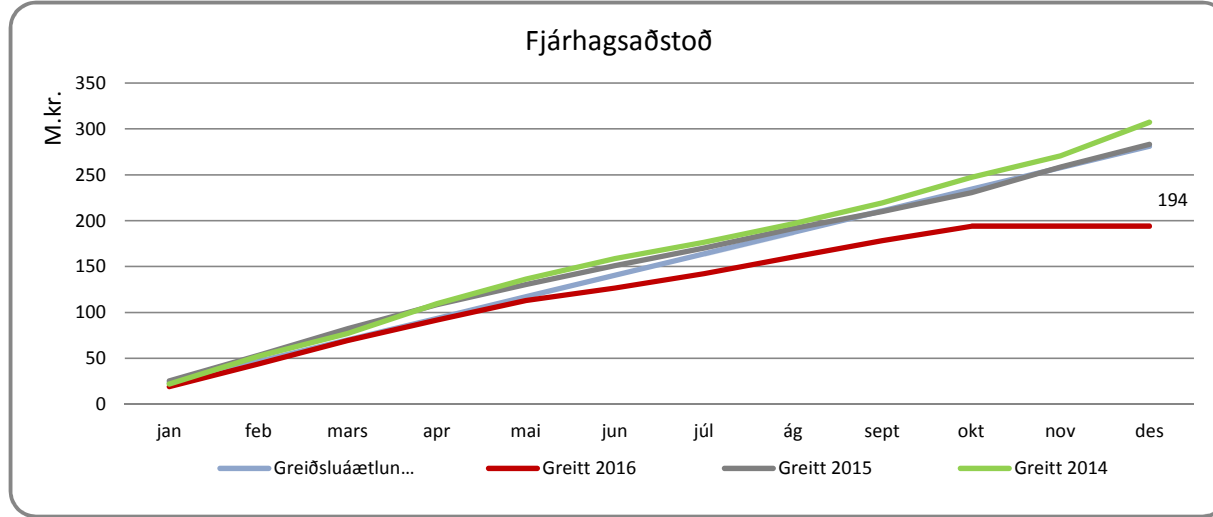
Áninga- og útsýnisstaður í Kórahverfi vestan við Fjallakór var tekinn í notkun 28. október. Áningastaðurinn var fyrsta verkefnið úr Okkar Kópavogi sem tekið var formlega í notkun. Staðurinn er hugmynd frá íbúa, Maríu Maríusdóttur, sem var valinn af íbúum Kópavogs í íbúakosningu. María lagði fram hugmyndina að áningastaðnum á

Rekstur helstu málaflokka



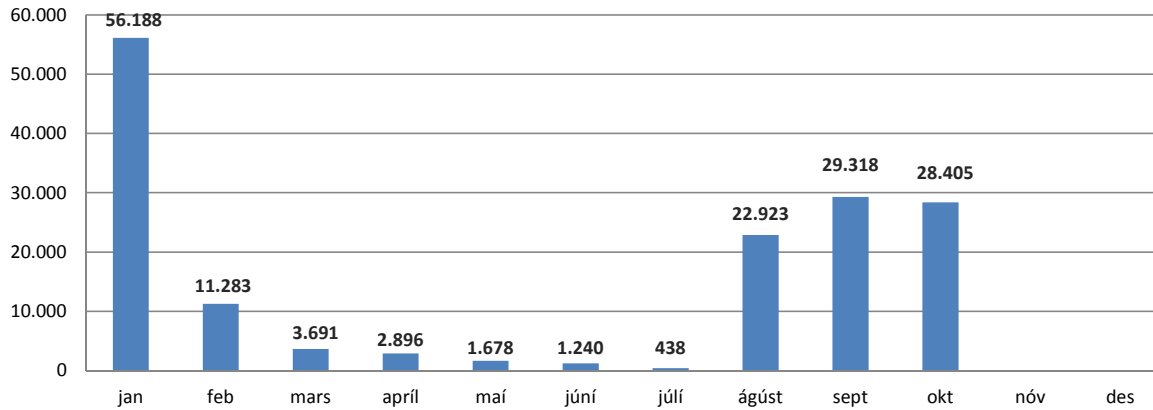


Velferðarmál

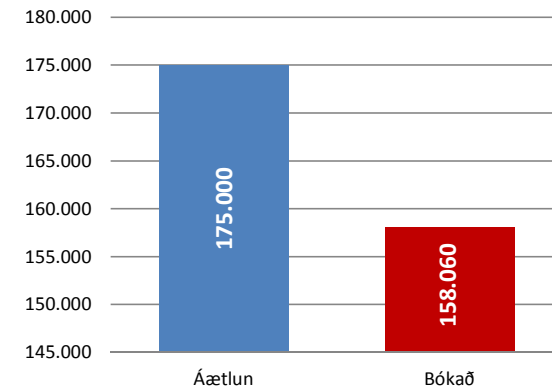


Tómstundamál

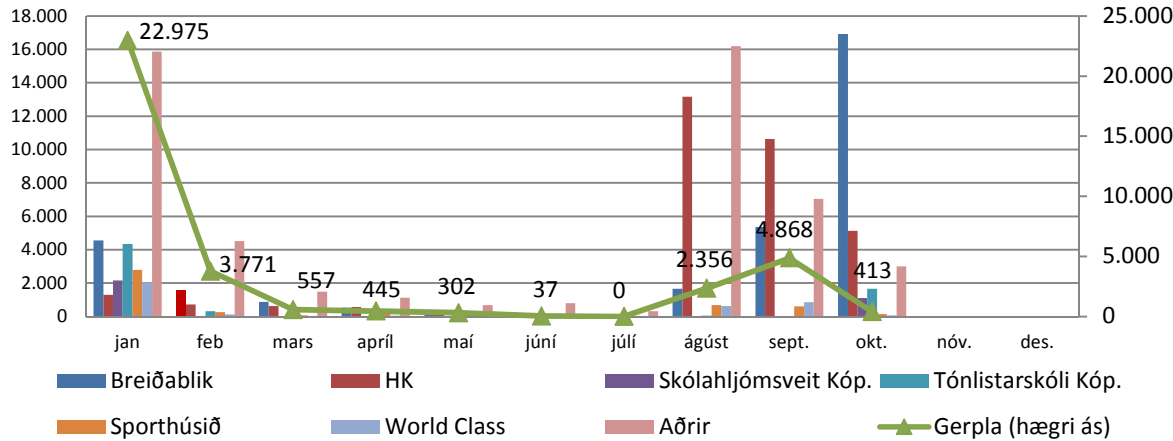
Greiðslur frístundastyrkja



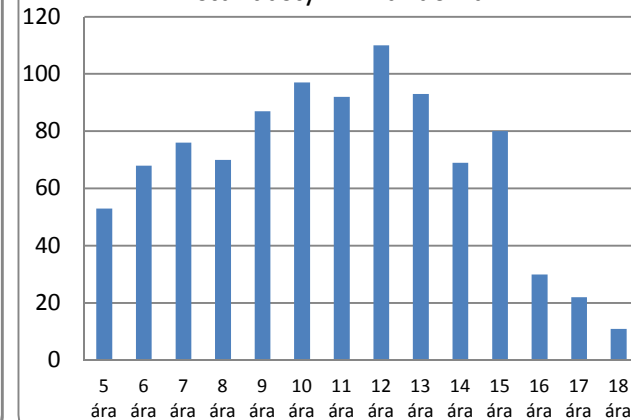
Frístundastyrkir - uppsöfnun ársins



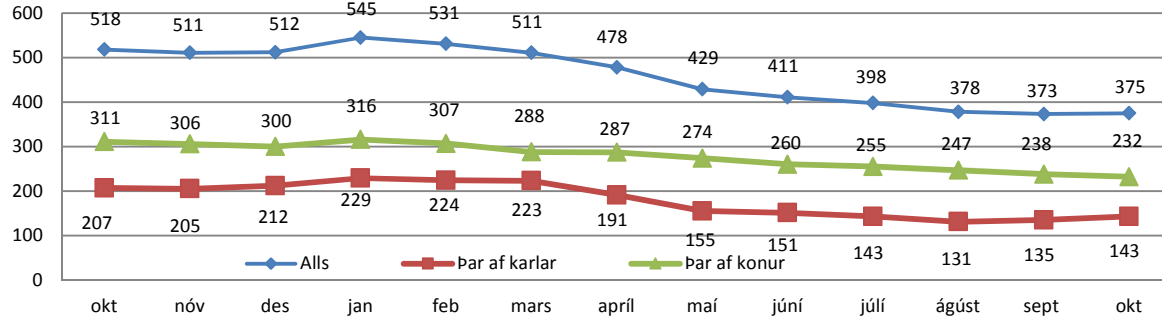
Frístundastyrkir eftir félögum í þús. kr.



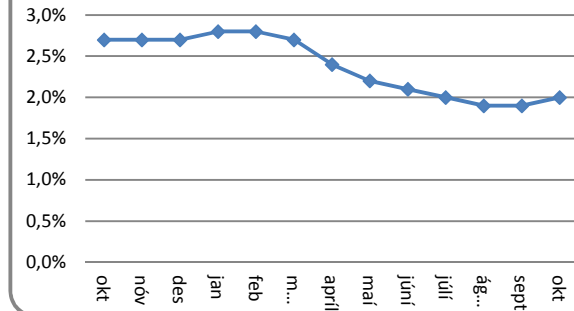
Aldur barna sem nýttu sér frístundastyrk í mánuðinum



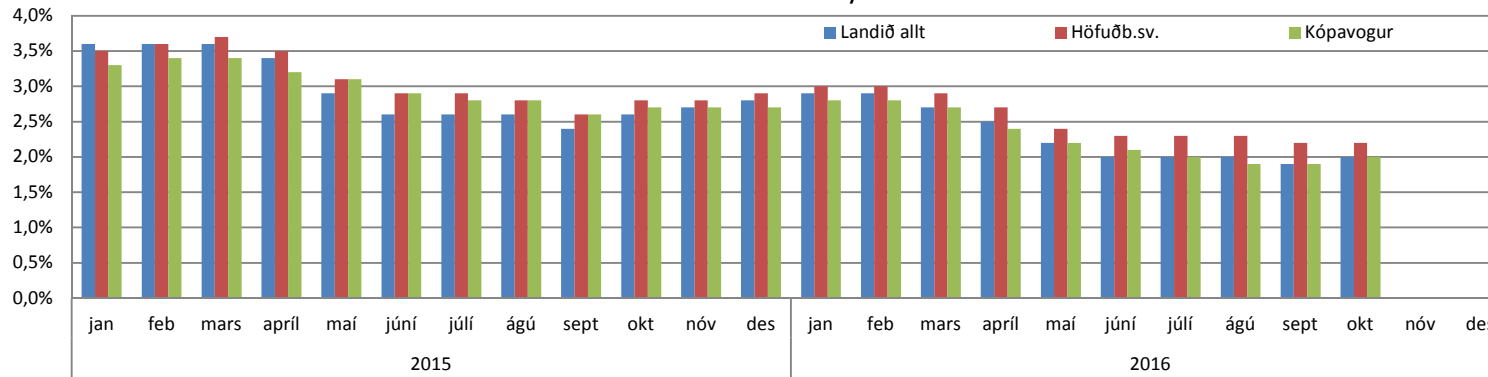
Fjöldi atvinnulausra



Áætlað atvinnuleysi

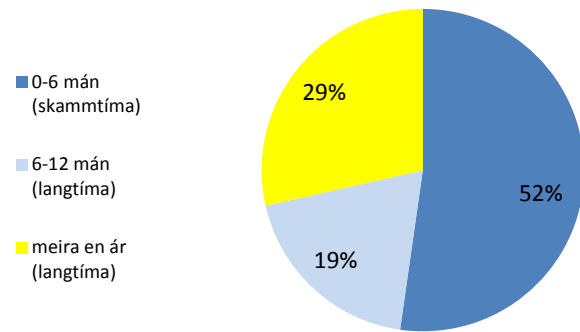


Atvinnuleysi - samanburður

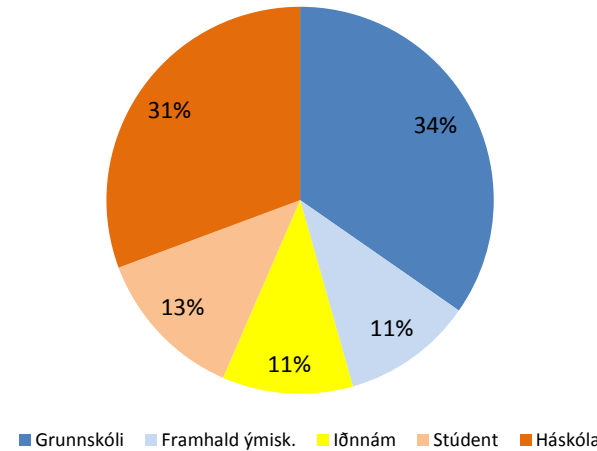


Í hverjum mánuði eru atvinnulausir í hlutastörfum á skrá í Kópavogi tæplega 10%, en tölur af landinu öllu og höfuðborgarsvæðinu miðast við atvinnuleysisdaga í hverjum mánuði (meðaltalsfjöldi). Því er ekki um samanburðarhæfar tölur að ræða að fullu.

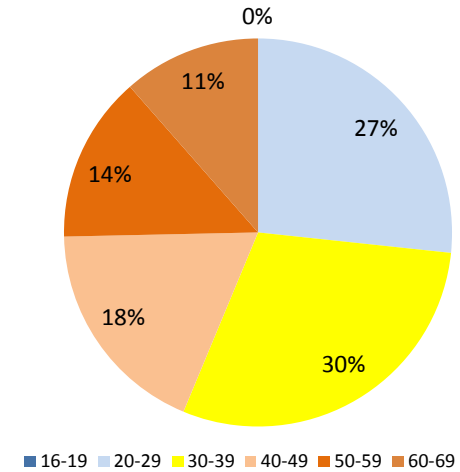
Lengd atvinnuleysis



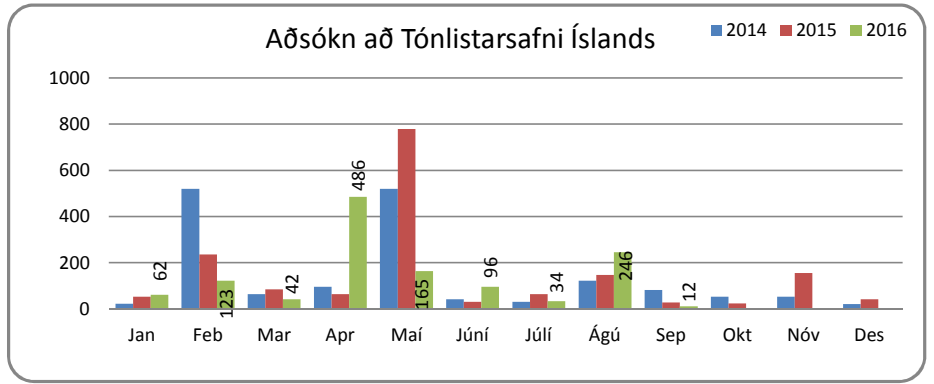
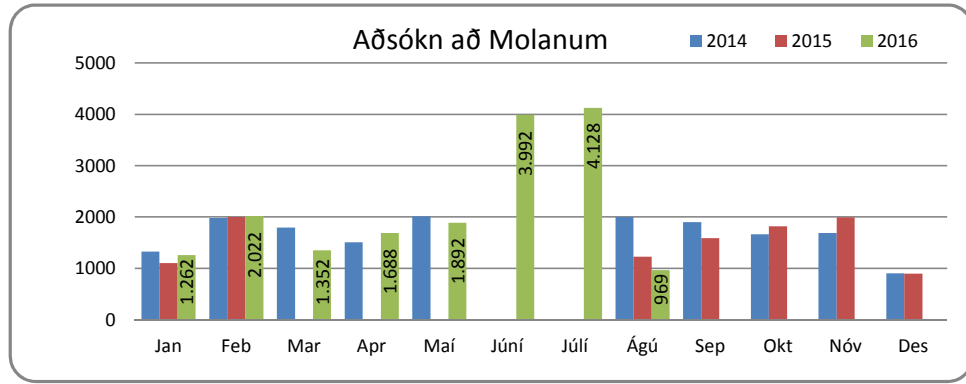
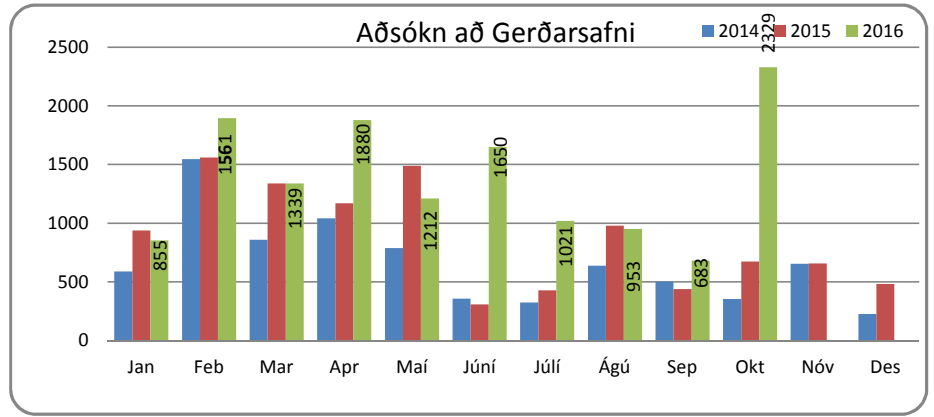
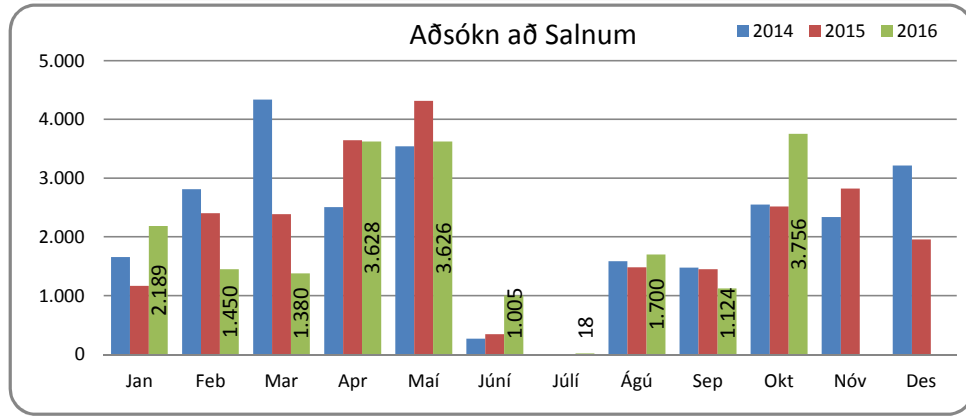
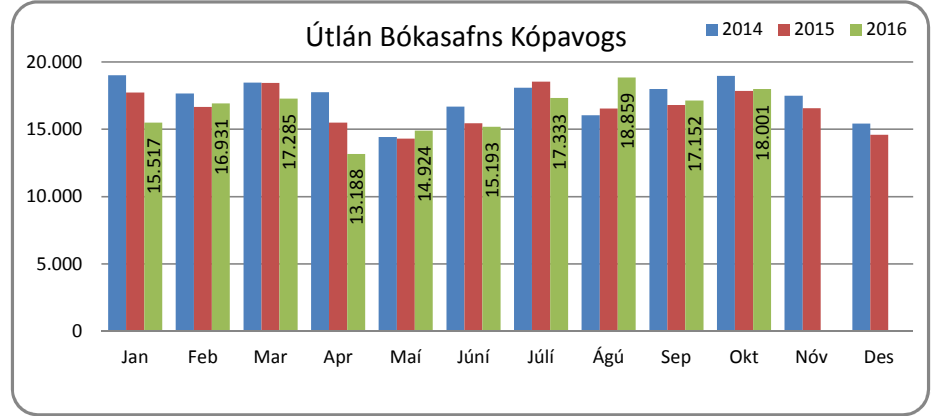
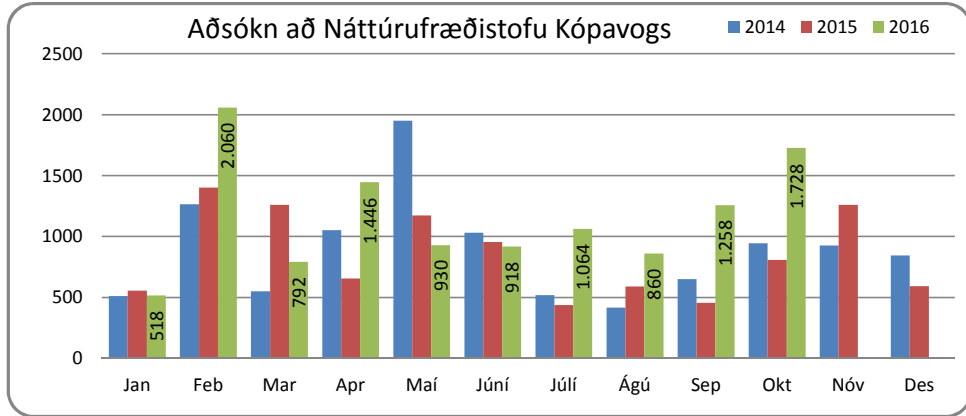
Menntunarstig atvinnulausra

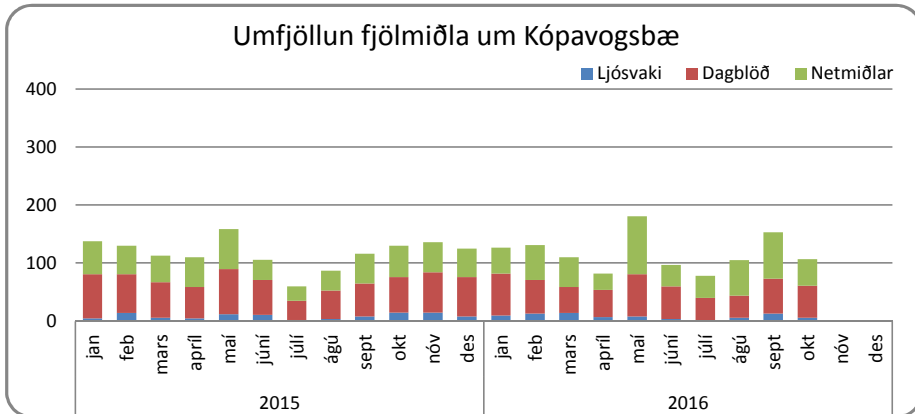
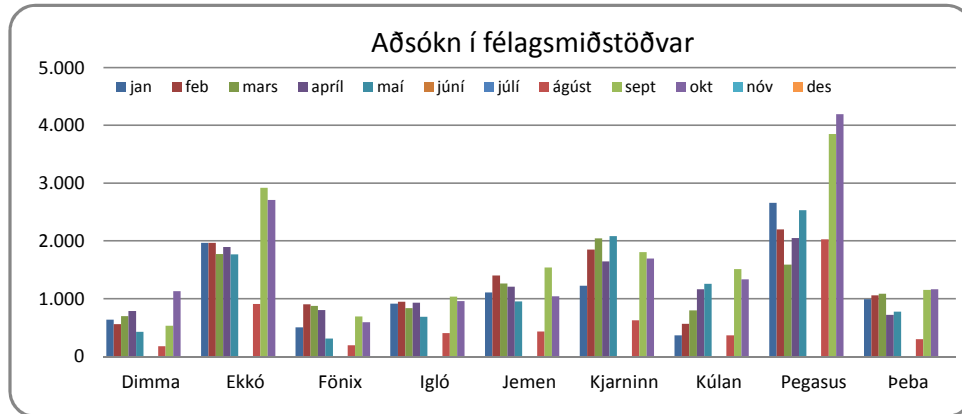
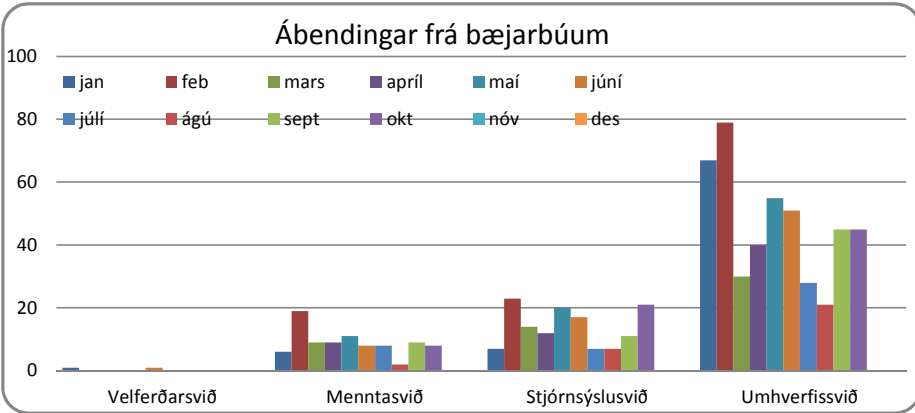
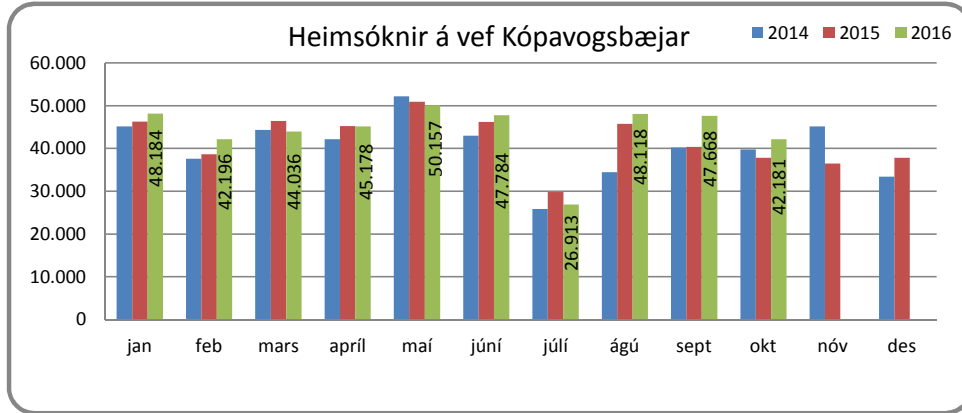
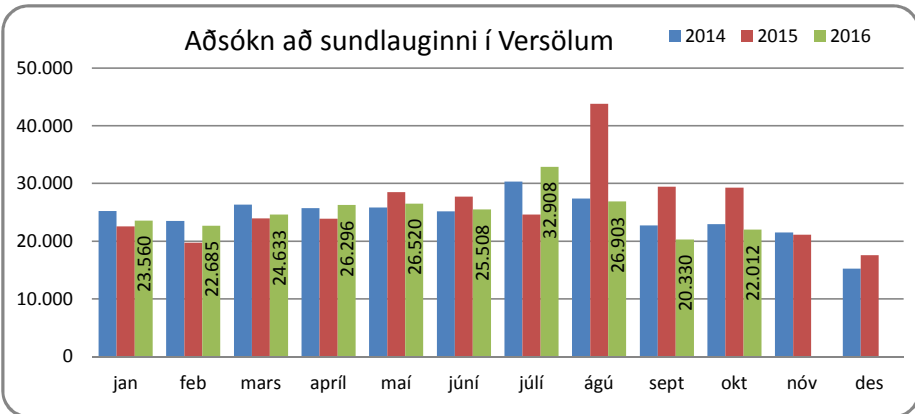
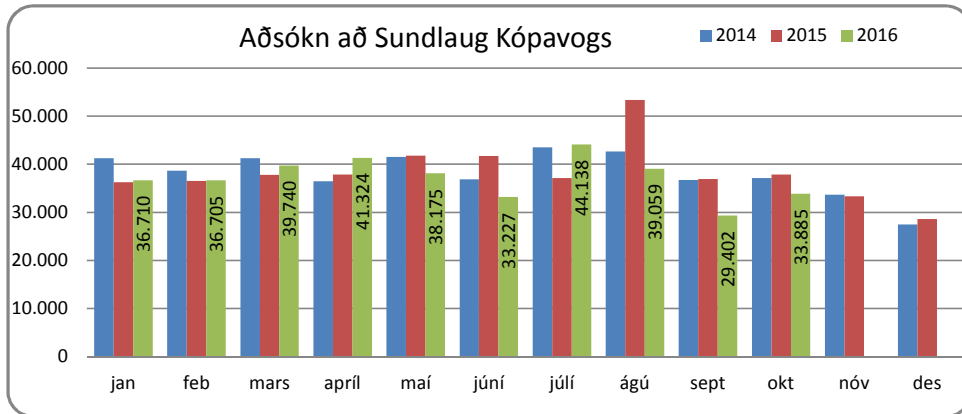


Aldursskipting atvinnulausra

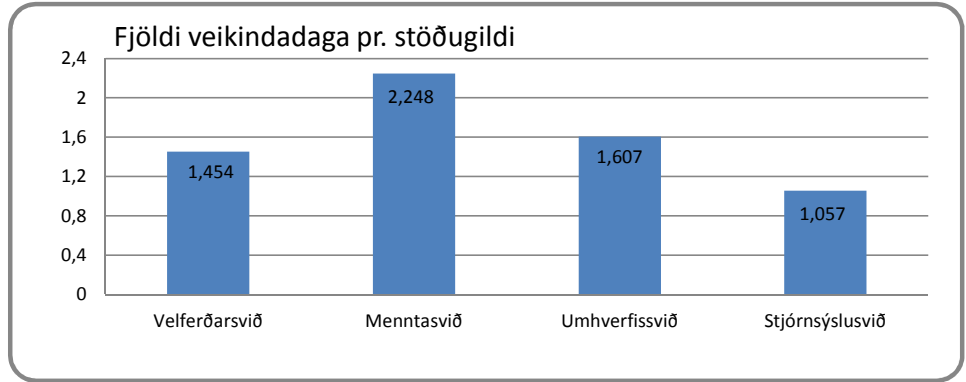
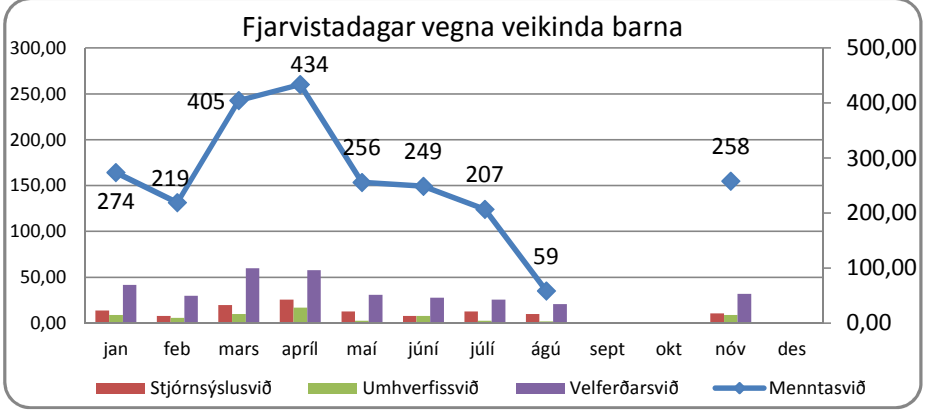
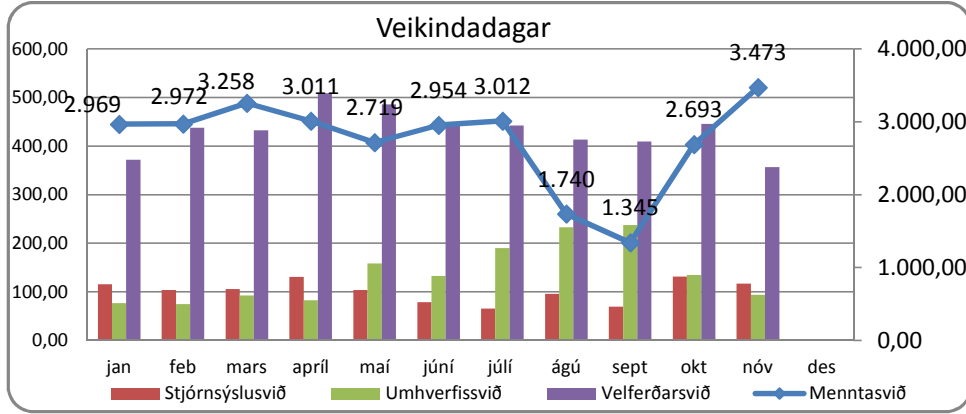
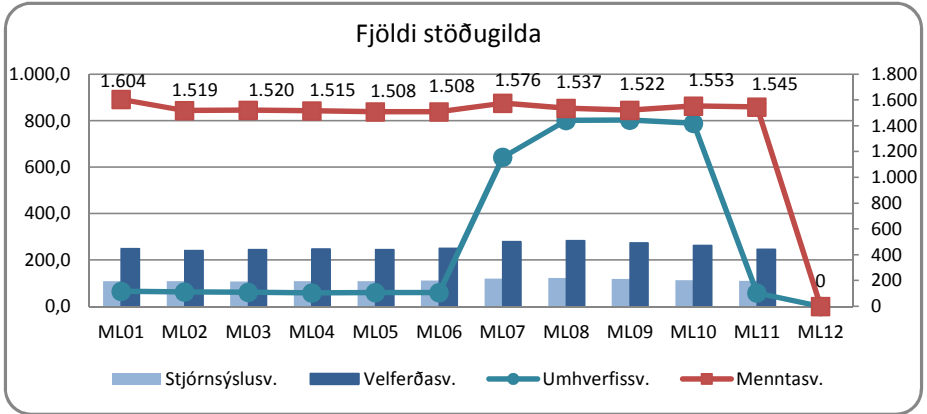
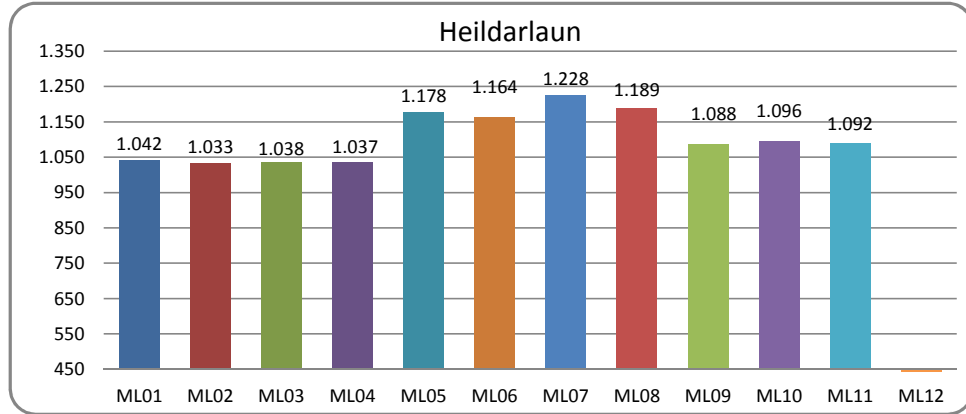


Ýmsar mælingar





Starfsmannamál



Heildarlaun starfsmanna Kópavogsbæjar eru í milljónum króna. ML11 stendur fyrir útborguð mánaðarlaun 1. nóvember. Tölur eru með launatengdum gjöldum.